

CONNECTICUT COTTAGES & GARDENS | JANUARY 2019

COTC & G

Connecticut Cottages and Gardens

COTTAGESGARDENS.COM | JANUARY 2019

A Fresh Approach

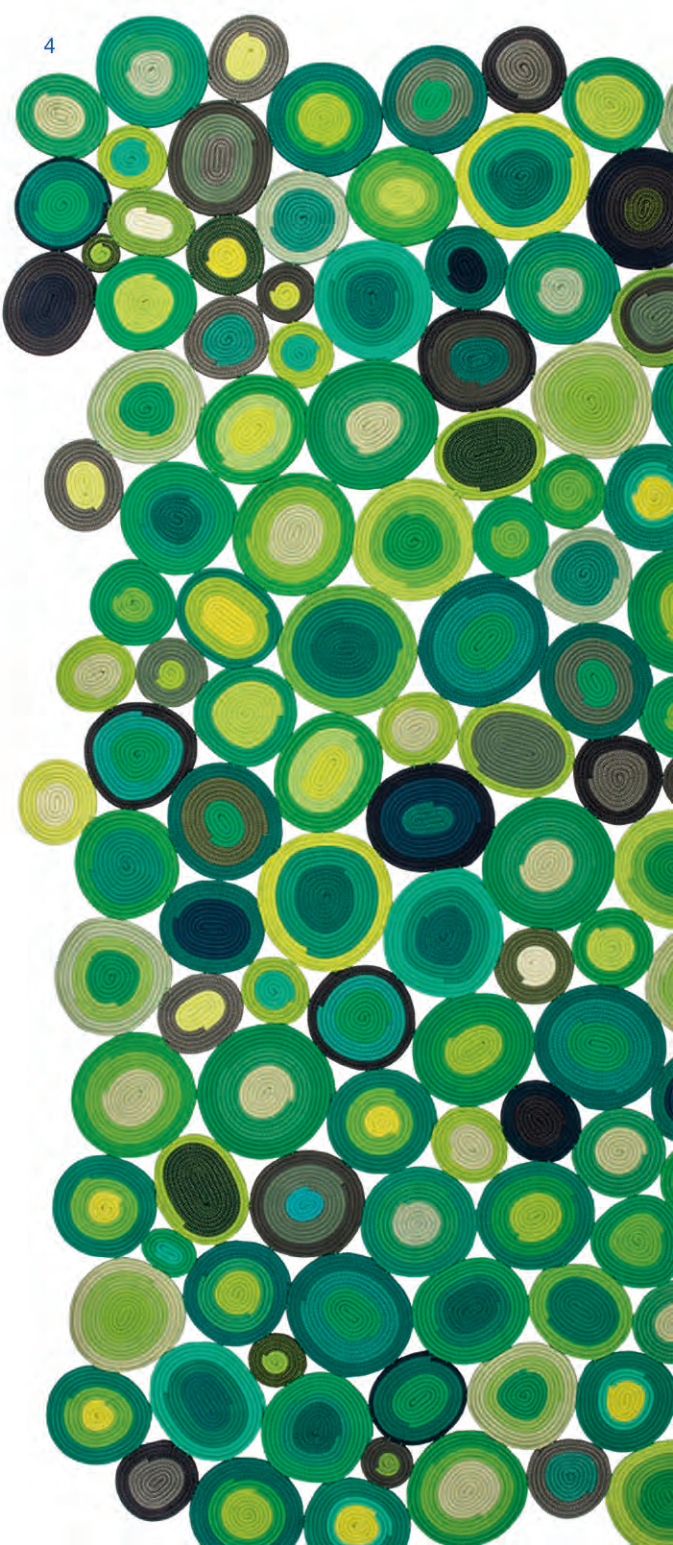
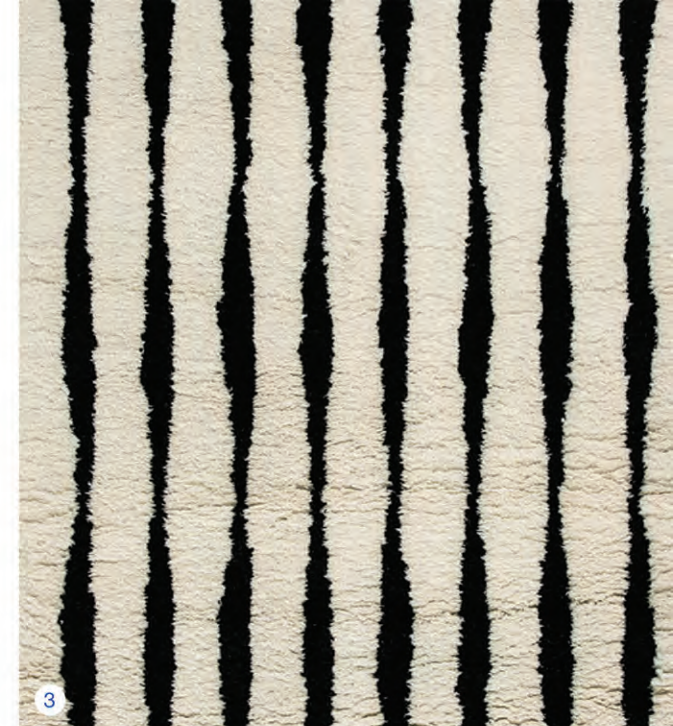
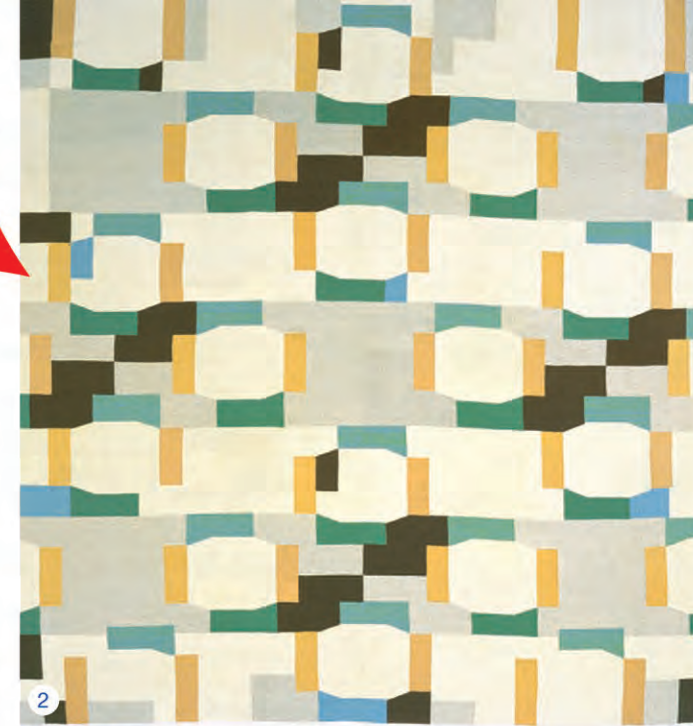


COTTAGESGARDENS.COM

UREN R

PATRICK ARCH

GRAY MALIN



FLOOR SHOW

MOD SQUAD

1. Each one-of-a-kind Prism rug from **ABC Carpet & Home** is hand-woven in Nepal in shades of blue silk. NYC, [abchome.com](#).
2. Based on a Swedish design, the Bond rug by **FJ Hakimian** is woven in wool on cotton and can be customized in size and color. NYC, [fjakimian.com](#).
3. The Fjord wool rug by **Nordic Knots** was inspired by an aerial view of the Norwegian coastline and its many fjords. [nordicknots.com](#).
4. **Paola Lenti's** unique patterns are produced with polyolefin rope cording, shaped and sewn by hand to form round and oval decorating modules. Available through [ddcnyc](#), NYC, [ddcnyc.com](#), [paolalenti.com](#).
5. Parisian designers Ronan and Erwan Bouroullec experiment with repetitive lines and rhombuses in their Blur series kilims, shown here in green, from **Nanimarquina**. NYC, [nanimarquina.com](#).

RUGS TAKE CENTER STAGE IN GRAPHIC, TRIBAL AND ANIMAL-INSPIRED DESIGNS

PRODUCED BY MARY FITZGERALD